

# Wall Mounted Outdoor Bottle Refill Station

The outdoor bottle filling station offers convenient, fresh water access while promoting environmental sustainability.

- Rapid bottle filling allows users to fill up a standard 500ml water bottle in under seven seconds
- Durable build with a heavy-gauge steel frame ensures longevity and protects the bottle filler from both vandals and the elements
- A simple push-button actuation system makes filling a bottle a simple, convenient task



## Product features and benefits



### Durable and vandal-resistant design

Ideal for outdoor installation, featuring a vandal-proof activation unit and corrosion-resistant construction inside and out.

Built to withstand harsh weather conditions, and is vandal resistant. Ensuring reliable performance in any environment.



### Efficient water dispensing

Water flow rate of 1 gallon per minute ensures quick, easy, and clean drinking water, suitable for high-demand environments.

Designed for efficiency and convenience, providing fast access to hydration when it's needed most.

Fills a 500ml bottle in 7 seconds with a corrosion-resistant E-Coat finish and vandal-resistant design, perfect for outdoor use.



### Enhanced safety and aesthetics

E-Coat immersion for corrosion resistance, with rounded corners for enhanced safety and aesthetics.

Specifically designed for parks, sports facilities, and public areas, ensuring a blend of durability, safety, and visual appeal.

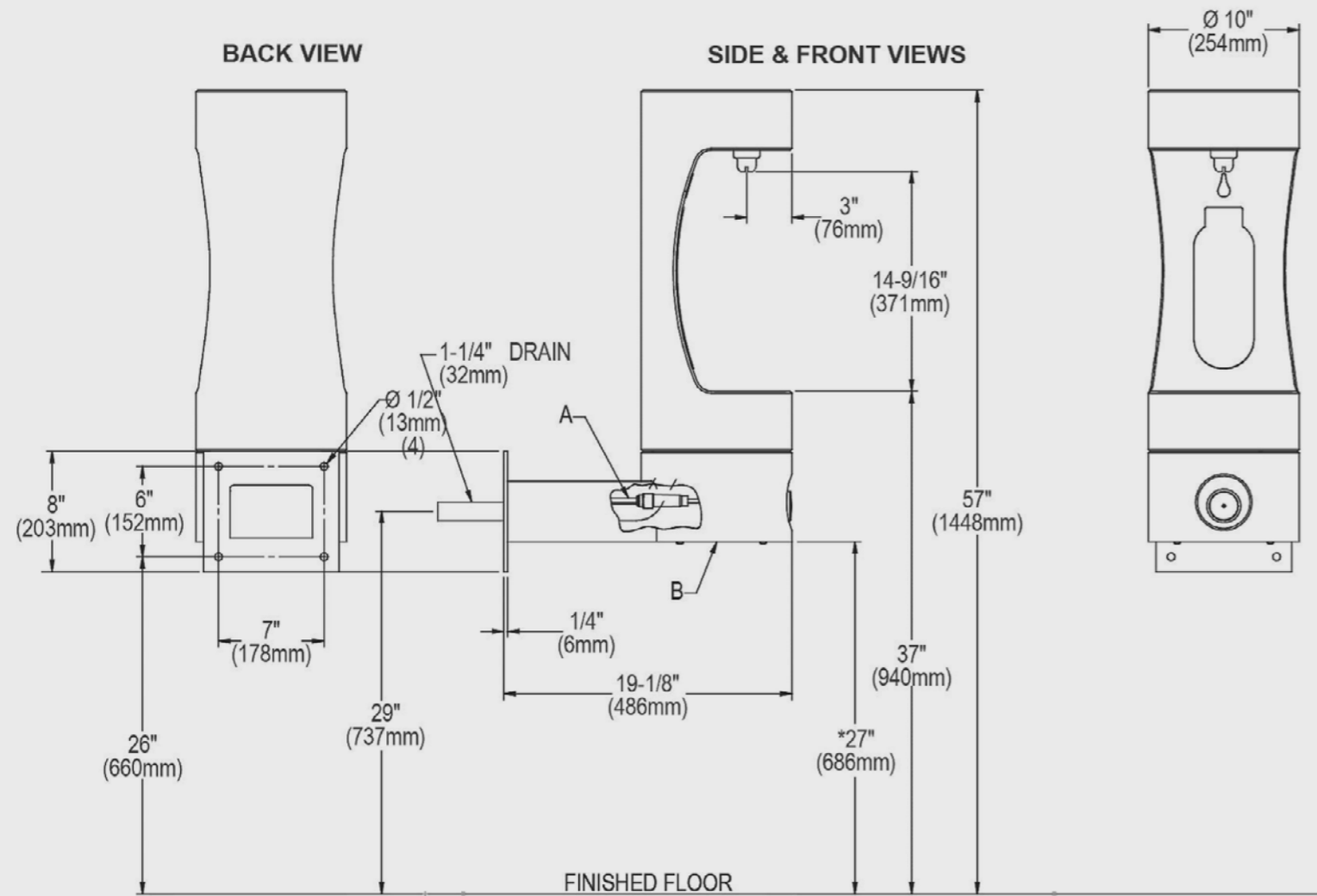


Available in 12 different finishes, we also offer custom-branding options so you can apply your company logo to the unit.\*

\*Additional costs may apply.



## Technical specifications



A = 3/8" O.D. Unplated copper tube connect. Shut off valve by others.  
 B = Access panel(8" x 10")  
 Note : New Installations Must Use Ground Fault Circuit Interrupter (GFCI).

\* ADA Requirement

## Specifications

Model	Wall-mounted
Filtration	Optional
W x H x D	254 x 462 x 486 mm
Wall Security Brackets	Included
Waste Option(s)	Drain 32mm
Weight	42 Kg
Rated Input	N/A
Chilled Water Production	N/A

## Installation requirements

Power supply	No electrical required
Water supply	2.5 Bar
CO2 Gas	N/A
Mains waste	32mm standard waste or soak away required
Ventilation	N/A

## Water options

Ambient	Cold	Hot
☹️		

*Culligan*<sup>TM</sup>  
Water you love.<sup>TM</sup>